

**PROJECT**  
**BALLIEMEANOCH**  
**PUMPED STORAGE**  
**HYDRO**

**CLIENT**  
 ILI (Borders PSH) Ltd.

**CONSULTANT**  
 AECOM Limited  
 177 Bothwell Street  
 Glasgow, G2 7EQ  
 www.aecom.com

- LEGEND**
- Development Boundary
  - Residential Properties
  - Indicative Road Links**
  - Link 1
  - Link 2
  - Link 3
  - Link 4
  - Link 5
  - Link 6 & 7
  - Link 8
  - Link 9
  - Link 10
  - Link 11
  - Link 12
  - Link 13
  - Link 14
  - Link 15
  - Link 16
  - Link 17
  - Link 18
  - Link 19
  - Link 20
  - Headpond Embankment 1
  - Headpond Embankment 2
  - Headpond Waterbody

**NOTES**  
 Reproduced from Ordnance Survey digital map data © Crown copyright 2023. All rights reserved. Licence number 0100031673.

**ISSUE PURPOSE**  
 Final

**PROJECT NUMBER**  
 60570241

**FIGURE TITLE**  
 Noise Sensitive Receptors - Road Links

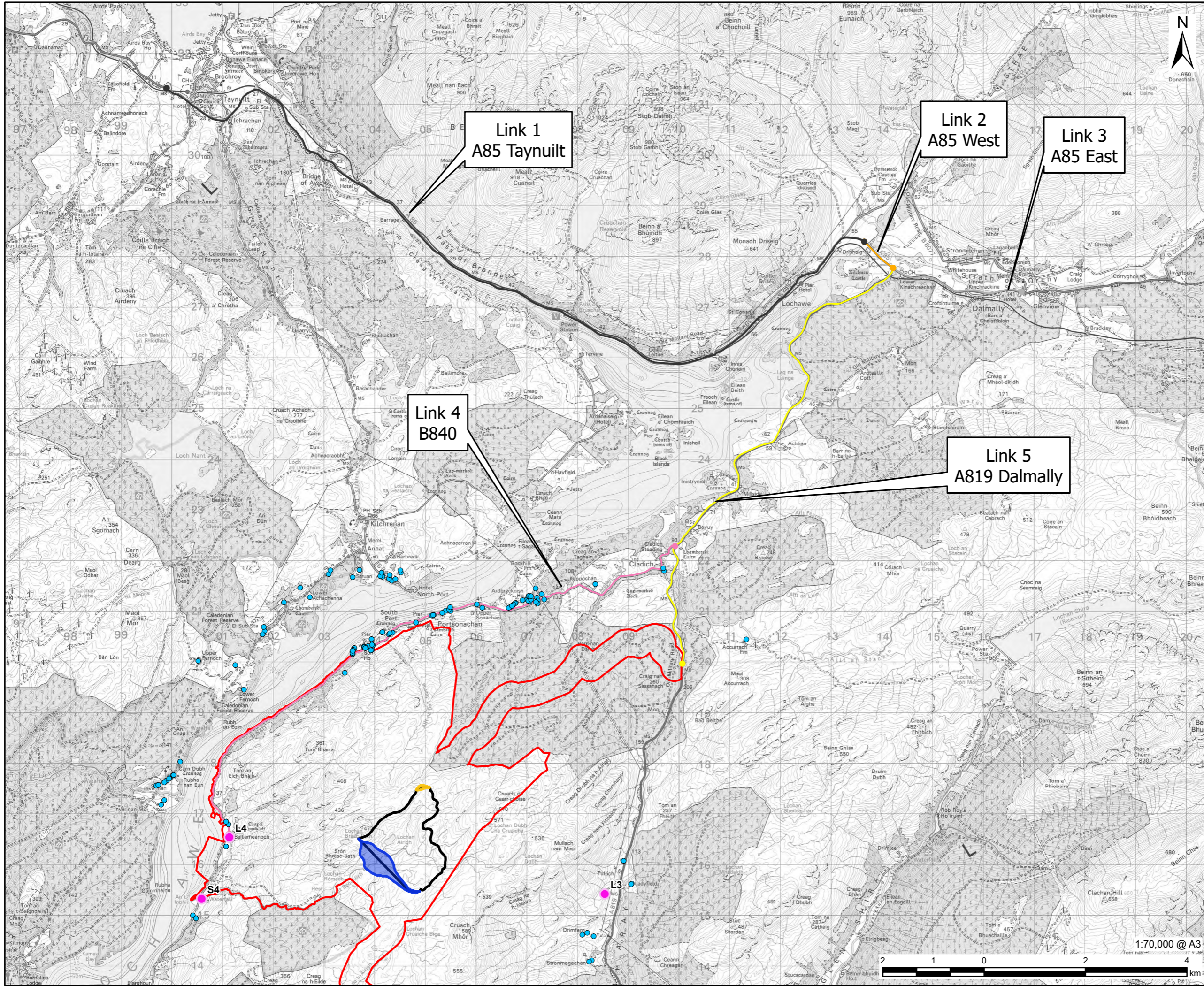
**FIGURE NUMBER**  
 Figure 15.3 (Sheet 1 of 5)

1:120,000 @ A3



This drawing has been prepared for the use of AECOM's client. It may not be used, modified, reproduced or relied upon by third parties, except as agreed by AECOM or as required by law. AECOM accepts no responsibility, and denies any liability whatsoever, to any party that uses or relies on this drawing without AECOM's express written consent. Do not scale this document. All measurements must be obtained from the stated dimensions.





# AECOM

**PROJECT**  
**BALLIEMANOCH  
 PUMPED STORAGE  
 HYDRO**

**CLIENT**  
 ILI (Borders PSH) Ltd.

**CONSULTANT**  
 AECOM Limited  
 177 Bothwell Street  
 Glasgow, G2 7EQ  
 www.aecom.com

- LEGEND**
- Development Boundary
  - Residential Properties
  - Indicative Road Links**
  - Link 1
  - Link 2
  - Link 3
  - Link 4
  - Link 5
  - Headpond Embankment 1
  - Headpond Embankment 2
  - Headpond Waterbody

**NOTES**

Reproduced from Ordnance Survey digital map data © Crown copyright 2023. All rights reserved. Licence number 0100031673.

**ISSUE PURPOSE**  
 Final

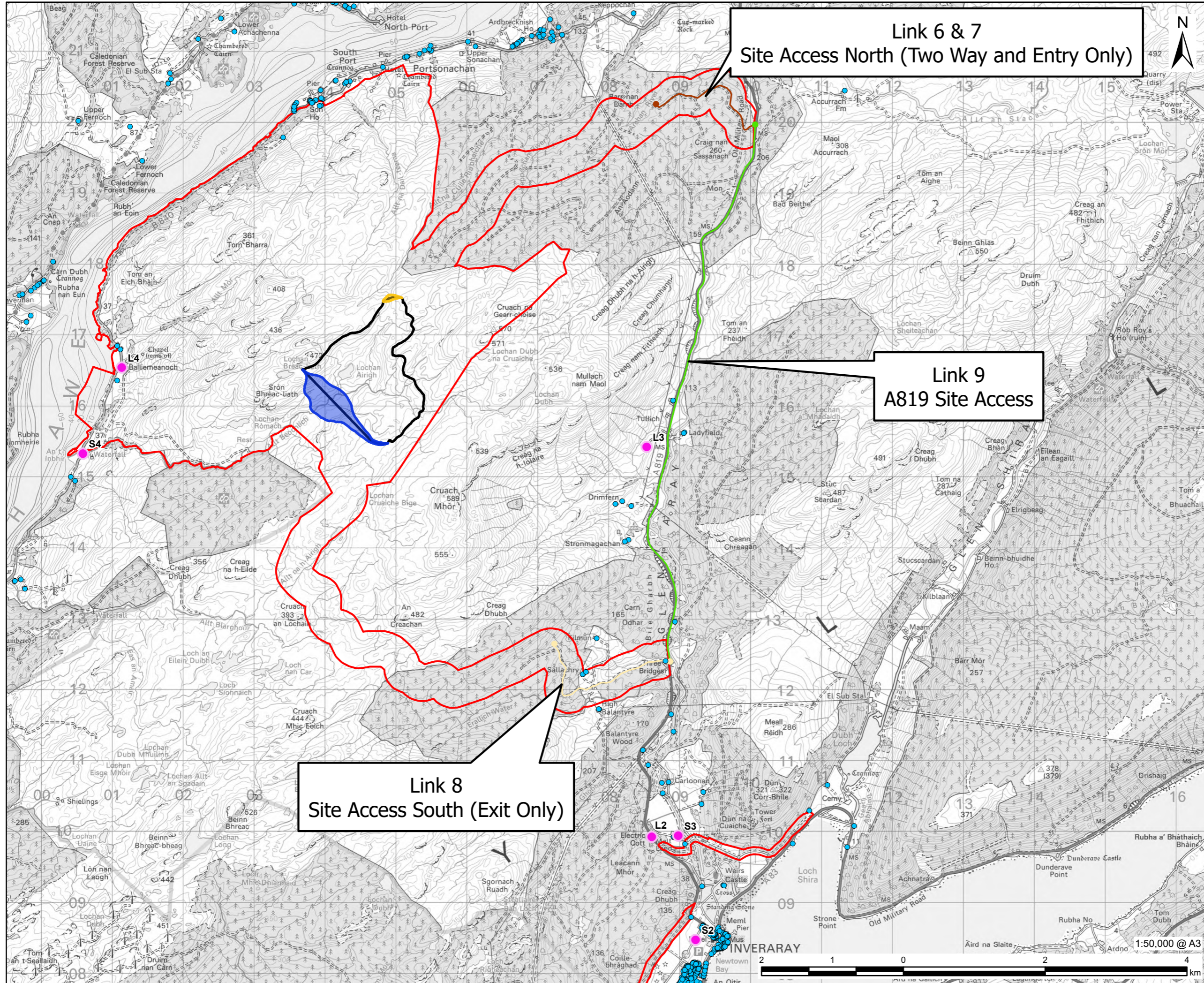
**PROJECT NUMBER**  
 60570241

**FIGURE TITLE**  
 Noise Sensitive Receptors - Road Links

**FIGURE NUMBER**  
 Figure 15.3 (Sheet 2 of 5)

This drawing has been prepared for the use of AECOM's client. It may not be used, modified, reproduced or relied upon by third parties, except as agreed by AECOM or as required by law. AECOM accepts no responsibility, and denies any liability whatsoever, to any party that uses or relies on this drawing without AECOM's express written consent. Do not scale this document. All measurements must be obtained from the stated dimensions.





**AECOM**

PROJECT  
**BALLIEMEANOCH  
 PUMPED STORAGE  
 HYDRO**

CLIENT  
**ILI (Borders PSH) Ltd.**

CONSULTANT  
 AECOM Limited  
 177 Bothwell Street  
 Glasgow, G2 7EQ  
 www.aecom.com

**LEGEND**

- Development Boundary
- Residential Properties
- Indicative Road Links
- Link 6 & 7
- Link 8
- Link 9
- Headpond Embankment 1
- Headpond Embankment 2
- Headpond Waterbody

**NOTES**

Reproduced from Ordnance Survey digital map data © Crown copyright 2023. All rights reserved. Licence number 0100031673.

**ISSUE PURPOSE**

Final

**PROJECT NUMBER**

60570241

**FIGURE TITLE**

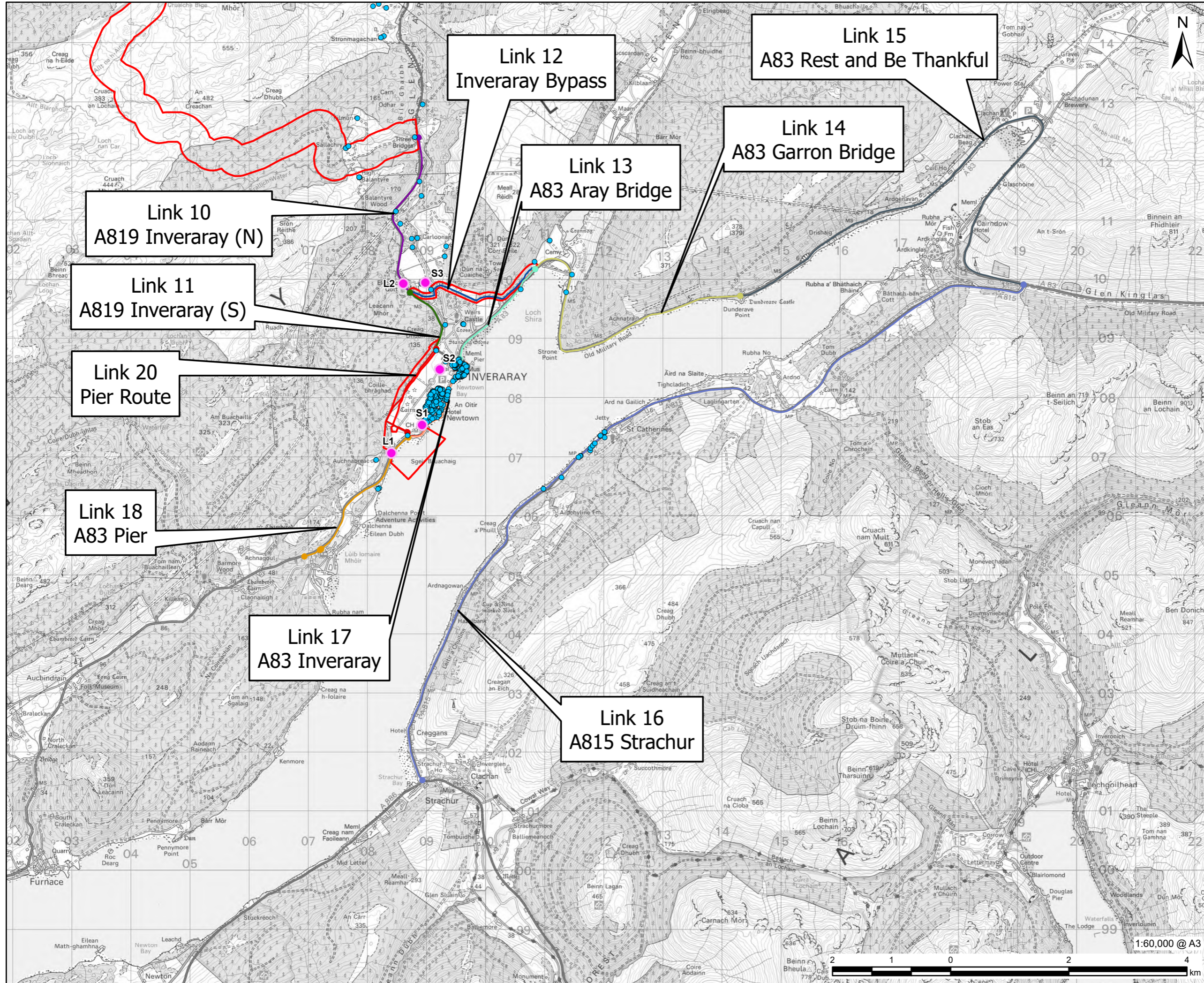
Noise Sensitive Receptors - Road Links

**FIGURE NUMBER**

Figure 15.3 (Sheet 3 of 5)

This drawing has been prepared for the use of AECOM's client. It may not be used, modified, reproduced or relied upon by third parties, except as agreed by AECOM or as required by law. AECOM accepts no responsibility, and denies any liability whatsoever, to any party that uses or relies on this drawing without AECOM's express written consent. Do not scale this document. All measurements must be obtained from the stated dimensions.





**PROJECT**  
**BALLIEMEANOCH  
 PUMPED STORAGE  
 HYDRO**

**CLIENT**  
 ILI (Borders PSH) Ltd.

**CONSULTANT**  
 AECOM Limited  
 177 Bothwell Street  
 Glasgow, G2 7EQ  
 www.aecom.com

- LEGEND**
- Development Boundary
  - Residential Properties
  - Indicative Road Links**
  - Link 10
  - Link 11
  - Link 12
  - Link 13
  - Link 14
  - Link 15
  - Link 16
  - Link 17
  - Link 18
  - Link 20
  - Headpond Embankment 1
  - Headpond Embankment 2
  - Headpond Waterbody

**NOTES**  
 Reproduced from Ordnance Survey digital map data © Crown copyright 2023. All rights reserved. Licence number 0100031673.

**ISSUE PURPOSE**  
 Final

**PROJECT NUMBER**  
 60570241

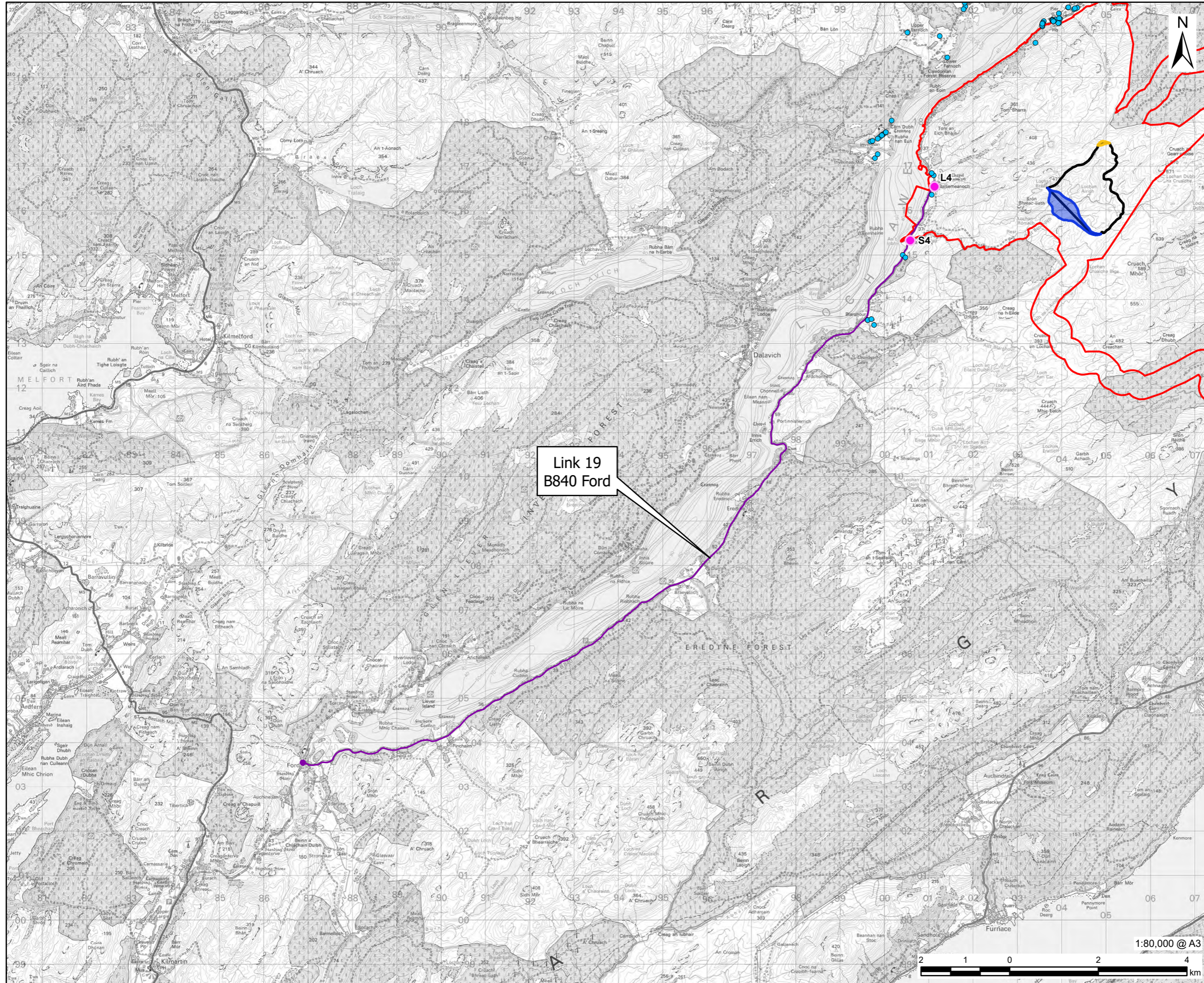
**FIGURE TITLE**  
 Noise Sensitive Receptors - Road Links

**FIGURE NUMBER**  
 Figure 15.3 (Sheet 4 of 5)



This drawing has been prepared for the use of AECOM's client. It may not be used, modified, reproduced or relied upon by third parties, except as agreed by AECOM or as required by law. AECOM accepts no responsibility, and denies any liability whatsoever, to any party that uses or relies on this drawing without AECOM's express written consent. Do not scale this document. All measurements must be obtained from the stated dimensions.





- LEGEND**
- Development Boundary
  - Residential Properties
  - Indicative Road Links
  - Link 19
  - Headpond Embankment 1
  - Headpond Embankment 2
  - Headpond Waterbody

**NOTES**

Reproduced from Ordnance Survey digital map data © Crown copyright 2023. All rights reserved. Licence number 0100031673.

**ISSUE PURPOSE**  
 Final

**PROJECT NUMBER**  
 60570241

**FIGURE TITLE**  
 Noise Sensitive Receptors - Road Links

**FIGURE NUMBER**  
 Figure 15.3 (Sheet 5 of 5)

This drawing has been prepared for the use of AECOM's client. It may not be used, modified, reproduced or relied upon by third parties, except as agreed by AECOM or as required by law. AECOM accepts no responsibility, and denies any liability whatsoever, to any party that uses or relies on this drawing without AECOM's express written consent. Do not scale this document. All measurements must be obtained from the stated dimensions.